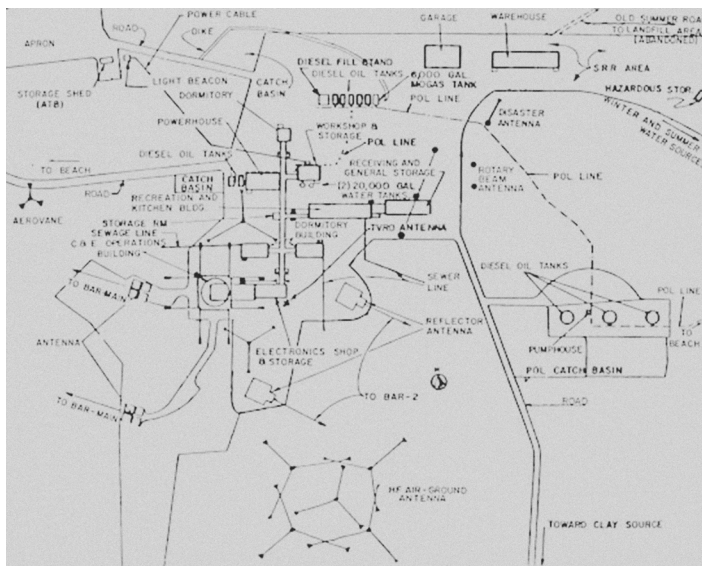
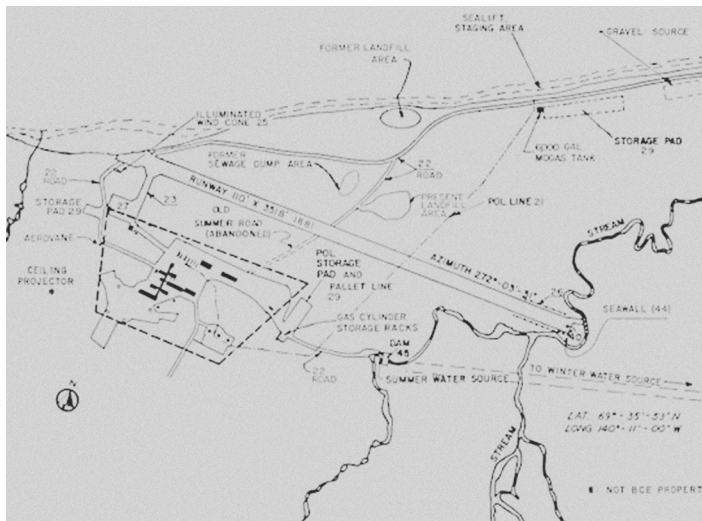


**Typical site layout for a Distant Early Warning (DEW) line station,  
Komakuk Beach, Yukon Territory**



**Runway layout for a DEW Line station, Komakuk Beach, Yukon  
Territory**





The DEW Line stations were constructed using per-fabricated modules that had to be towed across temporary rail tracks laid over the treacherous, frozen land.



**Balancing the modules proved difficult, DEW Line**



**Structural frame in construction for a chain of modules, DEW Line,  
Cambridge Bay, Nunavut**

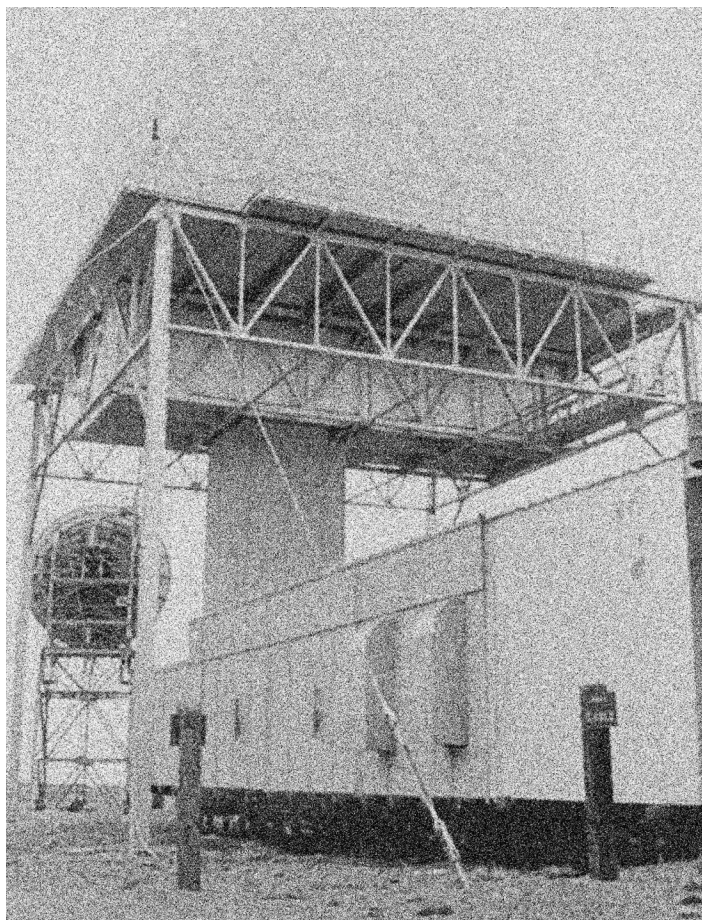


Module entrance, the modules were elevated off the ground to help mitigate the structure's warming and subsequent unsettling of the permafrost below. The height above ground also protected the entrances from being snowed-in, DEW Line, Komakuk Beach, Yukon Territory





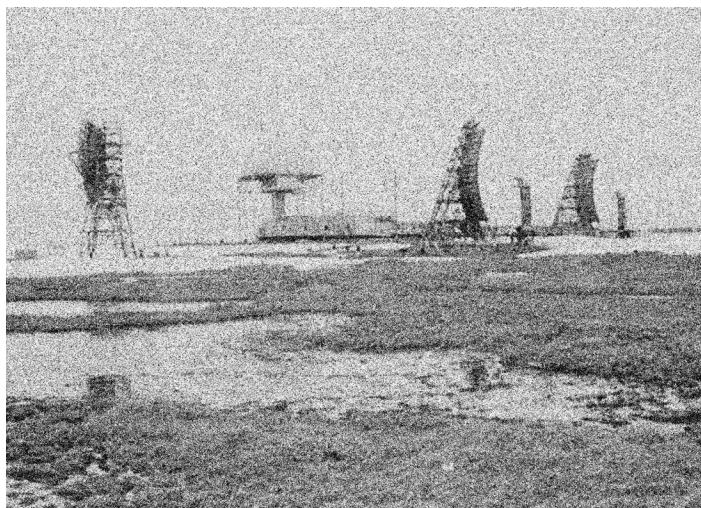
**Radar armature, DEW Line, Komakuk Beach, Yukon Territory**



**Communication dish and power supply cables elevated above the ground, DEW Line, Komakuk Beach, Yukon Territory**



**Radar flanked by communication dishes and Doppler antennae,  
DEW Line, Komakuk Beach, Yukon Territory**

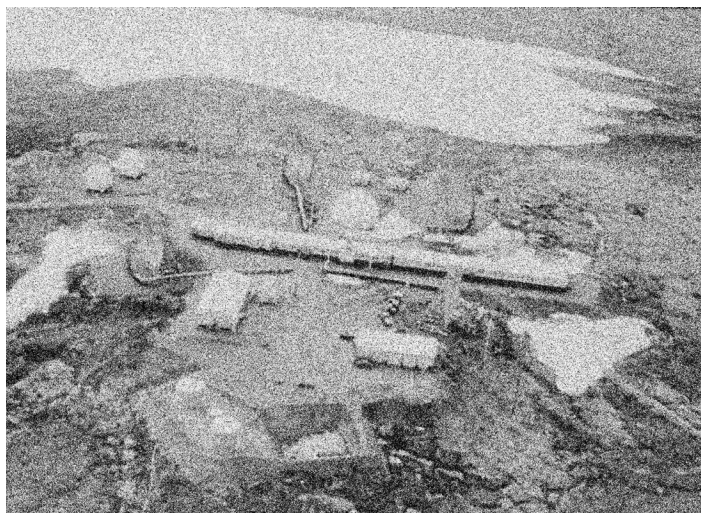


**Hazardous storage hut, DEW Line, Komakuk Beach, Yukon Territory**





**DEW Line, Shingle Point, Yukon Territory**



**DEW Line, Komakuk Beach, Yukon Territory**



**Suite of search equipment, DEW Line, Tuktoyaktuk, Northwest  
Territories**

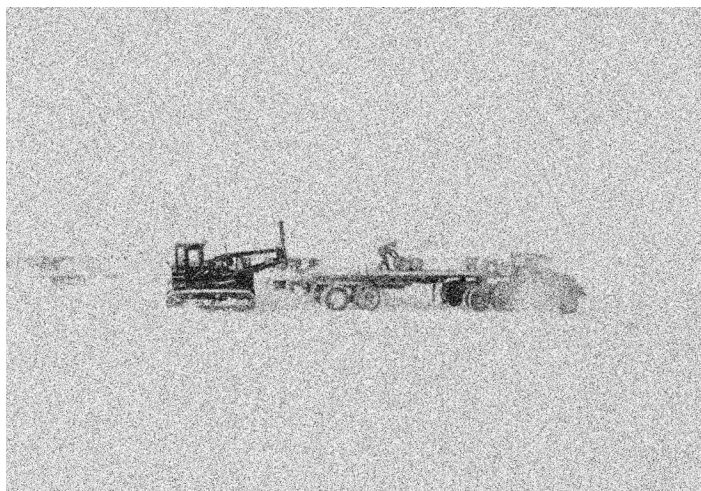


**DEW Line, Komakuk Beach, Yukon Territory**





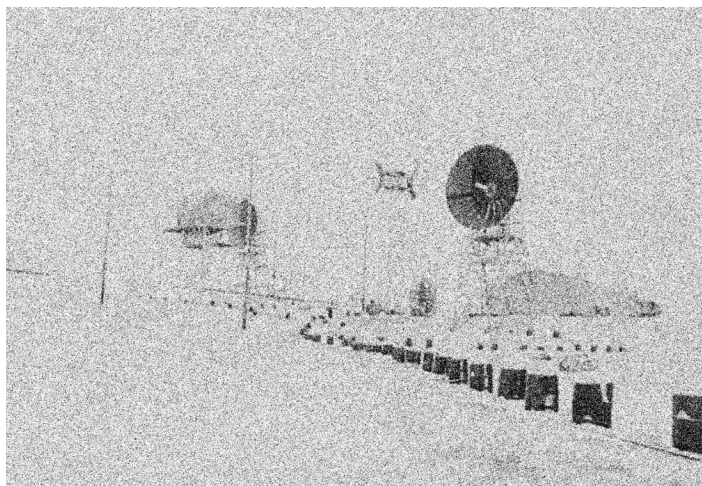
**DEW Line, Komakuk Beach, Yukon Territory**



**DEW Line, Hall Beach, Nunavut**



**DEW Line, Cape Perry, Northwest Territories**



**Beginnings of the Inuit town Frobisher Bay near DEW Line, Baffin  
Island, Nunavut**

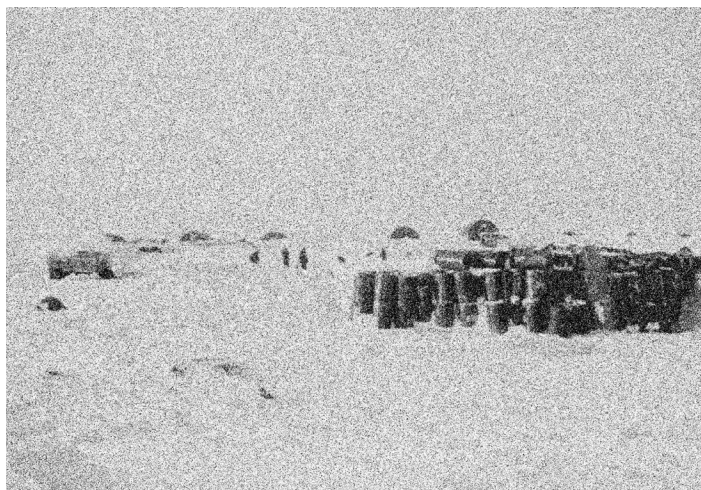




**Frobisher Bay near DEW Line, Baffin Island, Nunavut**



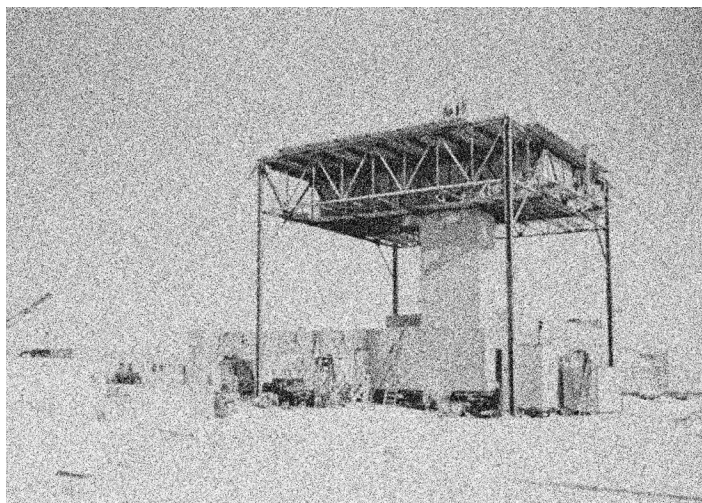
**DEW Line, Foxe Basin, Nunavut**



**Inuit Representative, DEW Line, Point Barrow, Alaska**

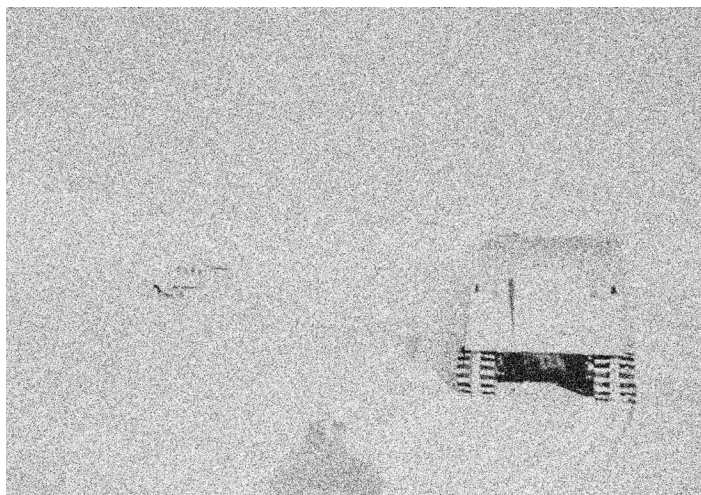


**DEW Line, Point Barrow, Alaska**

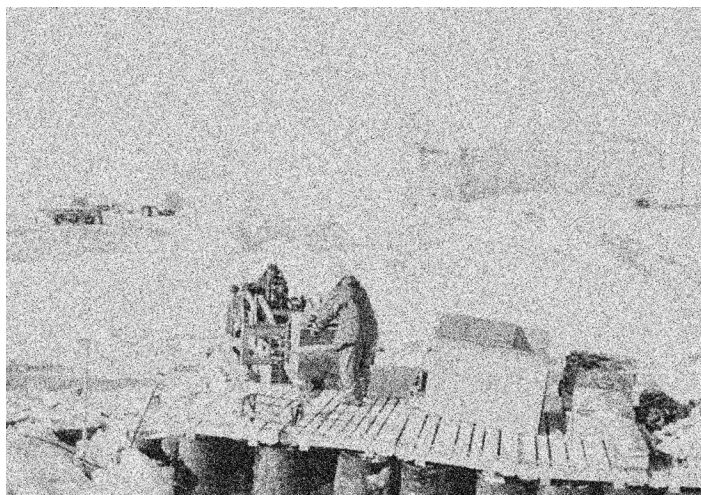




**DEW Line, Cape Dyer, Nunavut**



**DEW Line, Cape Dyer, Nunavut**



**DEW Line, Komakuk Beach, Yukon Territory**



**DEW Line, Komakuk Beach, Yukon Territory**





**DEW Line, Komakuk Beach, Yukon Territory**

